

DWR Draft Integrated Report  
2018 NC Water Quality Assessment  
Lower Neuse Basin  
**Focus on Chlorophyll**

Water Quality Data  
2012, 2013, 2014, 2015, 2016

5 year window

Unless small data set then 2006-2016



CWA Integrated Report 305(b) List  
CWA Impaired Waters List 303(d) List



Two Reports  
on the status of  
Water Quality Standards

Confusing in Many Ways

What are 303(d) “impaired waters” waters?

- Designated uses or the criteria are not met.
- Assessment methodology determines if waterbody is or is not attaining criteria.
- EPA has oversight of 303(d) process

# Assessment Categories

## *Integrated Report Categories*

**1 Meeting criteria**

**2 Meeting criteria (legacy)**

---

**3 Inconclusive or No Data**

---

**4 Exceeding criteria  
With TMDL or regulatory  
restoration strategy**

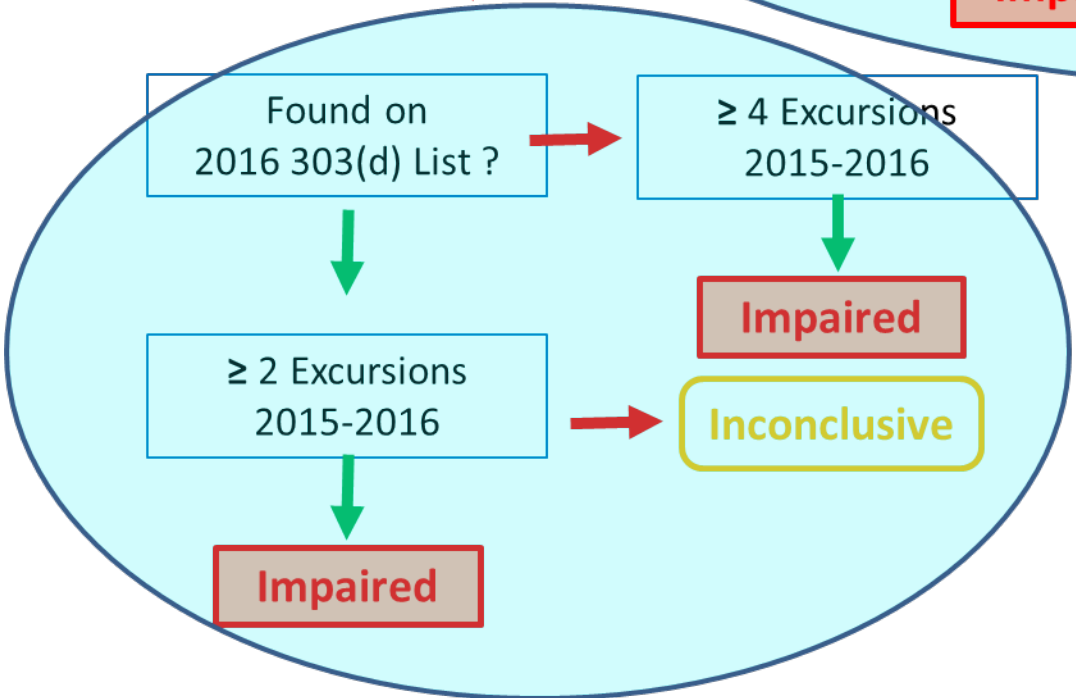
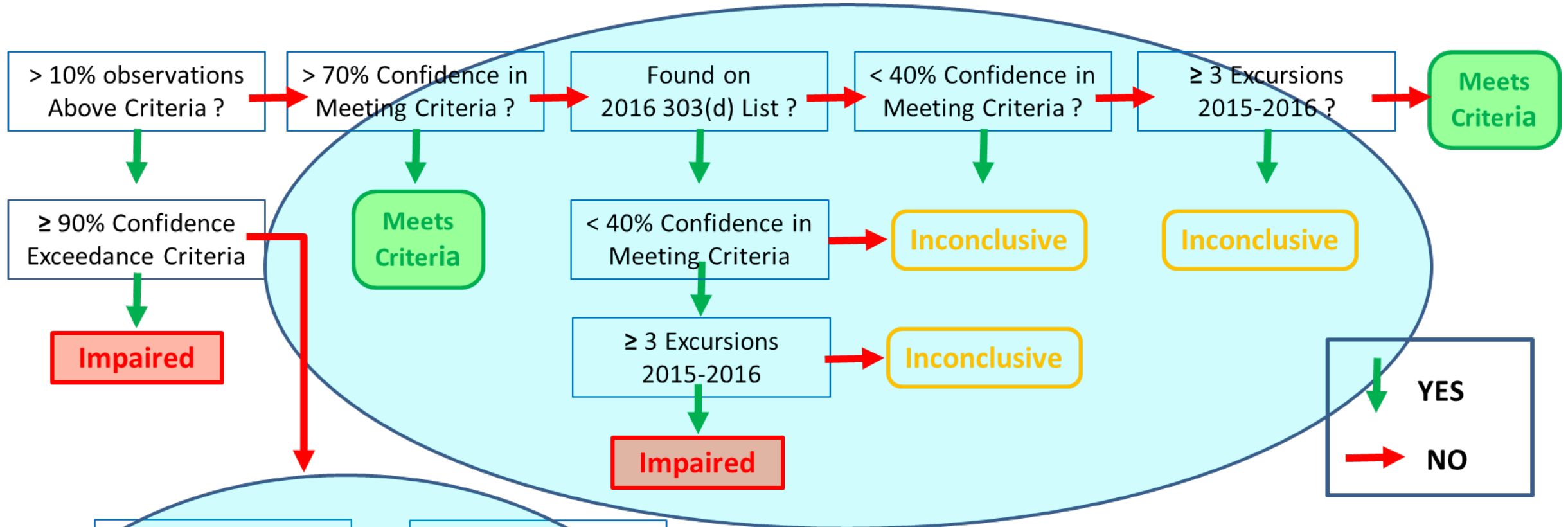
## *303(d) List*

**5**

**Exceeding criteria  
needs TMDL or regulatory  
restoration strategy**

## 2018 Changes for Draft 2018 303(d) and IR

- Updated data window: 2012-2016
- Added new delisting methodology (increased rigor for delisting)
- Added process for expanding small datasets
  - if < 10 obs expand window additional 5 years (2007-2016)
  - i.e. 10 obs in 10 years now OK
- New methods for numerical assessment
  - easier to get on the impaired list
  - harder to get off the list
- Assessment Unit (segmentation) issue review



**ENVIRONMENTAL MANAGEMENT COMMISSION**  
**2018 303(d) Listing Methodology**  
**Approved March 8, 2018**  
 2012-2016 Representation of Sample Sets ≥10



# 2018 IR listings Neuse Estuary - 10 Segments

## ~~(Possible Split AU's after 2016 Draft Fact Sheets)~~

- 1 • 27-(96)a Fr Streets Ferry to Batchelor Cr.
- ~~• 27-(96)b1 Fr Bachelor Creek to the Trent River~~
- 1    ▫ 27-(96)b1a
- 3/?   ▫ 27-(96)b1b
- 1    ▫ 27-(96)b1c
- 4 • 27-(96)b2 Fr Trent River to Johnson Pt/McCotter Pt
- ~~• 27-(104)a Johnson Point/McCotter Point to 1.2 miles ups of Slocum Creek/0.5 miles upstream of Beard Creek~~
- 4    ▫ 27-(104)a1
- 4    ▫ 27-(104)a2
- 4 • 27-(104)b fr 1.2 miles ups of Slocum Cr/0.5 miles upstream of Beard Cr. to Wilkinson Pt/Cherry Pt line
- ? • 27-(118)a1 Wilkinson Point/Cherry Point to Adams Creek/Wiggins Point
- 1/4 • 27-(118)a2 Adams Creek/Wiggins Point line to Pamlico Snd

# 2016 Final Integrated Report

# 2018 Draft Integrated Report

