



Facility Expansion in Challenging Times

August 4, 2022

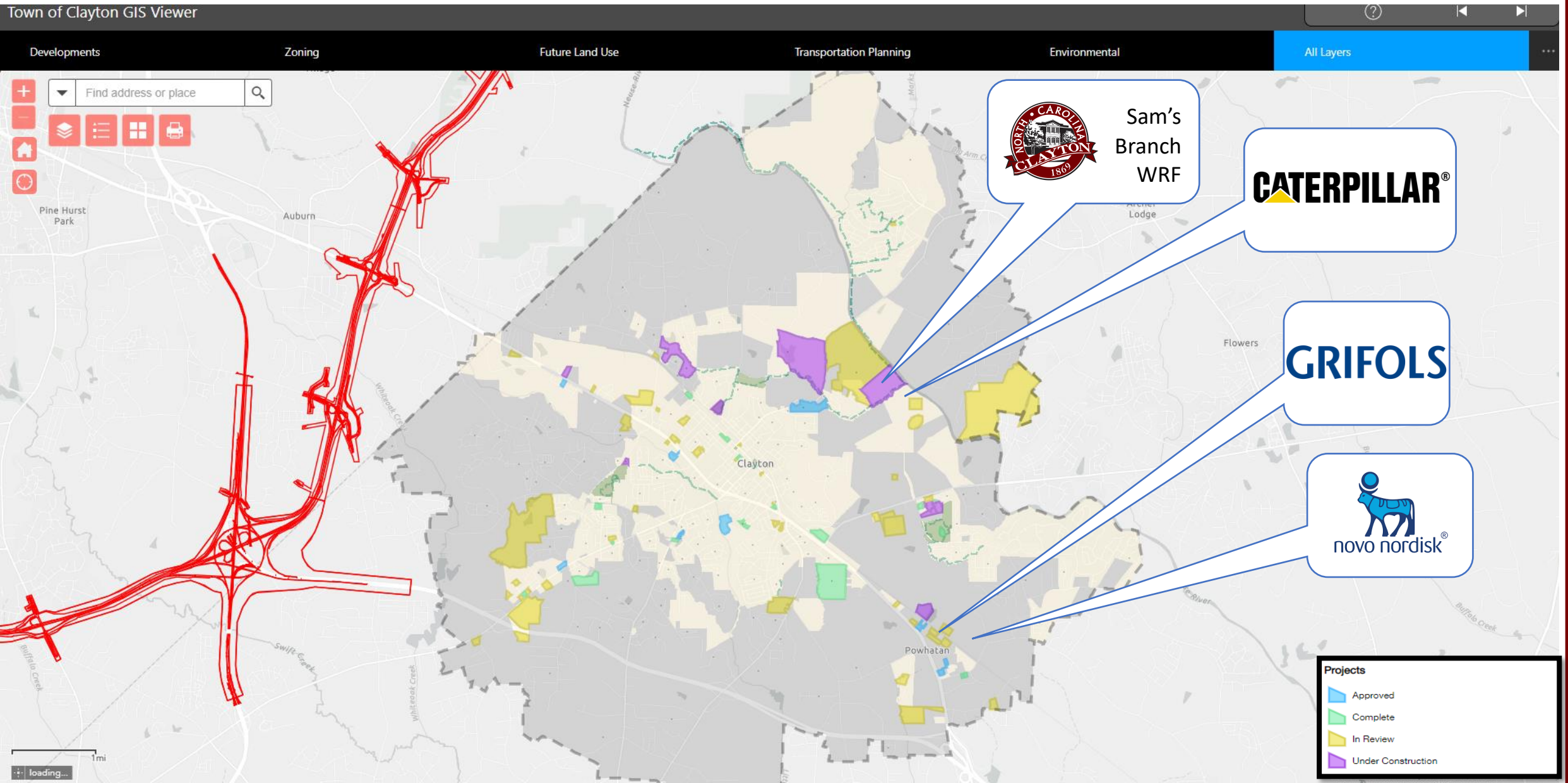
Agenda

- History and background of Program
- Role of current team members
- Ongoing and upcoming projects
- Program timeline
- Questions



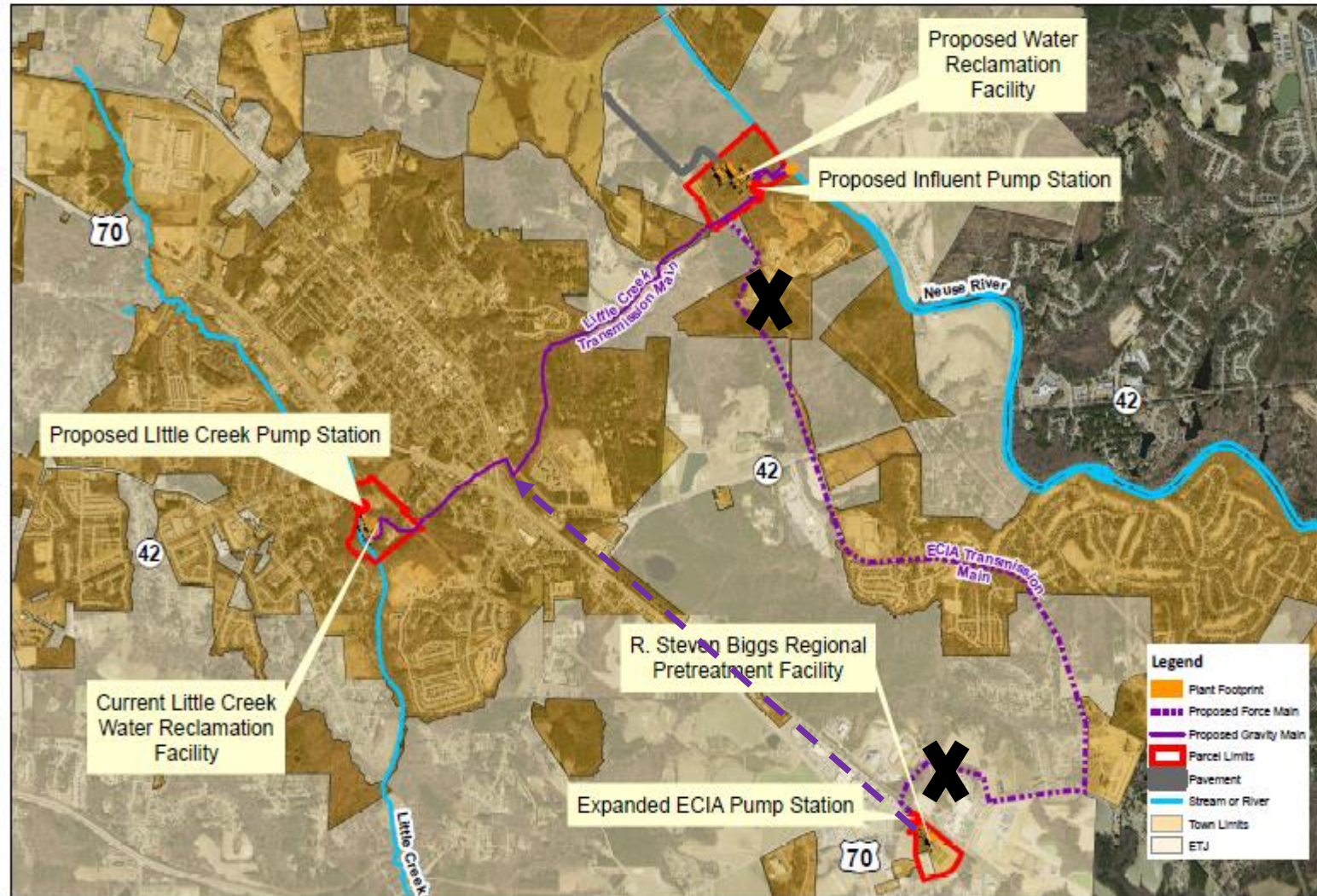
About Us...

Town of Clayton GIS Viewer




Sam's Branch WRF & Associated Conveyance Infrastructure Program

- Sam's Branch WRF
 - 6 MGD capacity (expandable to 10 MGD)
- Little Creek (LC) Conveyance
 - LC Pump Station (13 MGD)
 - LC Force Main & Gravity Sewer
- ECIA Conveyance
 - ECIA Pump Station improvements (to 5 MGD)
 - ECIA Force main



Sam's Branch WRF and Associated Conveyance Infrastructure Unified Project Organization



**Town Technical Leadership**
Byron Poelman
James Blalock
Bill Simpson

OWNER

OWNER'S ADVISOR

Town Mgr. – Rich Cappola
Town Eng. – Josh Baird
PM– Louis Duffie

Director – Adam Sharpe
PM – Drew Zirkle
Advisor – Kip Kalisiak


SAM'S BRANCH
WRF - Early
Work Package

SAM'S BRANCH
WRF

LITTLE CREEK PS
AND
CONVEYANCE

ECIA
CONVEYANCE

POWER TO SAM'S
BRANCH WRF


**Gannett Fleming**

DESIGN BUILDER

Director – Craig Crowther

Early Work Package

Gannett Fleming staying onboard to close out a small portion of the work.

**Gannett Fleming**


ENGINEER

PM – Teresa Peterson
DM – Eliezer Livay

TBD

CONTRACTOR

Gannett Fleming will continue as the Engineer of Record for Balance of Plant.

**WithersRavenel**
Engineers | Planners | Surveyors

ENGINEER

PM – Michael Wicker

CONTRACTOR

Pump Station – Haren Construction

Conveyance - JF Wilkerson

**WithersRavenel**
Engineers | Planners | Surveyors



**McKIM & CREED**
ENGINEERS SURVEYORS PLANNERS

ENGINEER

PM – Casey Garland (WR)
PM – Mark Fisher (MC)

TBD

CONTRACTOR

**OWNER**
Town of Clayton Power Department
ENGINEER
**TBD**
CONTRACTOR

Sam's Branch WRF Background





Completed work: Sam's Branch WRF



Ongoing work: Sam's Branch WRF

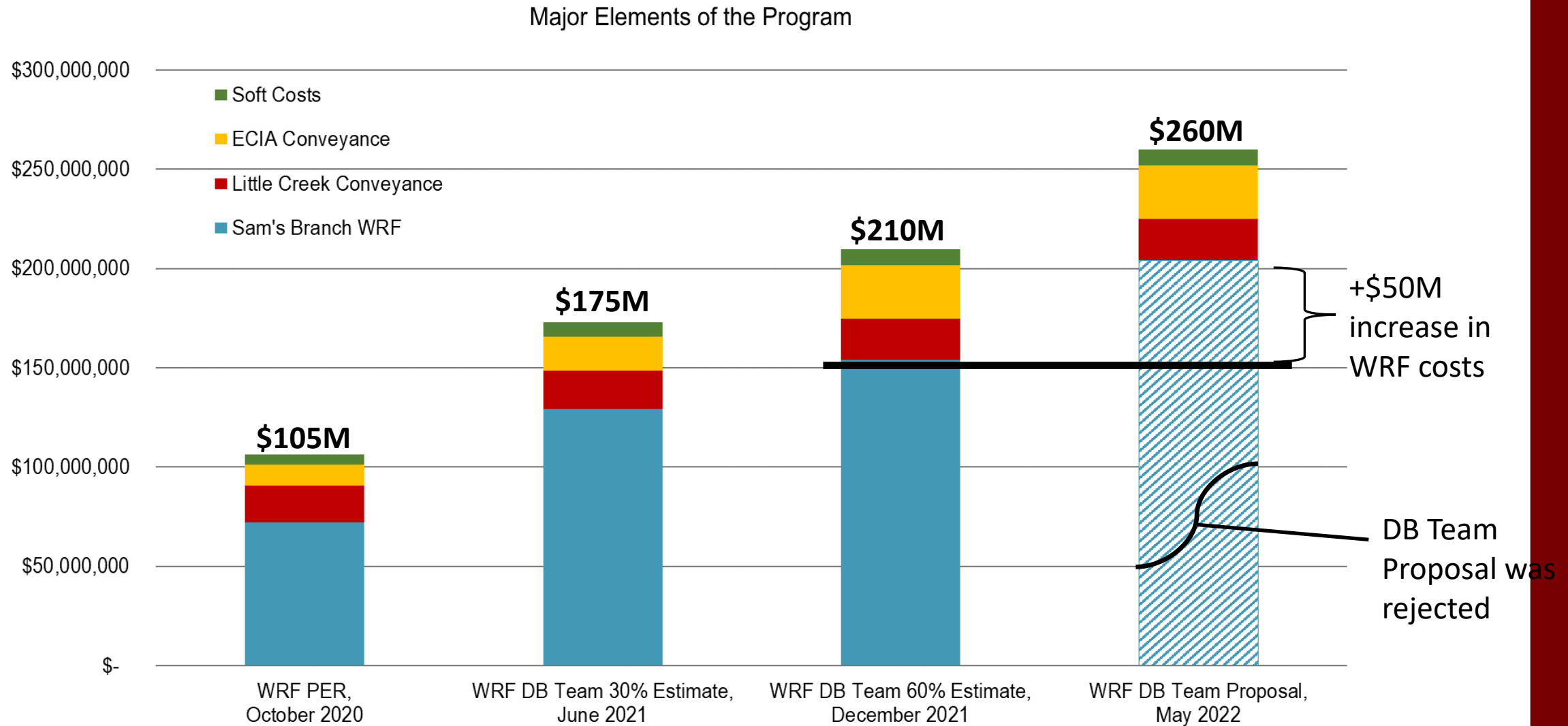


Early Work Package

- Outfall/ Effluent to MH5
- Phase 1 Sedimentation & Erosion control measures
- Procurement of blowers, screw presses, and all underground ductile iron yard piping



Program Costs Update



Drivers for the cost increases

Current National Construction Cost Data....March 2021 – March 2022

ENR COST DATA

Building Cost Index (labor + material)	+16.1%
Material Cost Index (material)	+37.6%

Key Cost Increases for Sam's Branch Program

- Piping Material
- Structural Steel
- Equipment
- Labor
- GCs and subcontractor's pricing higher risk
(cost escalation, labor shortages, supply chain)

BLS COST DATA

Inputs to Construction Materials	+21.0%
Steel Products	+42.6%
Steel Pipe	+63.7%
PVC Pipe	+93.1%
PVC Conduit	+59.2%
Copper Mill Shapes	+16.4%
Fabricated Rebar	+38.1%
Prefabricated Metal Buildings	+25.4%
Stainless Steel Pipe	+35.0%
Ductile Iron Pipe	+13.8%
Diesel Fuel	+63.8%
Truck Transportation of Freight	+24.5%

Program Path Forward...Schedule

- Schedule assumes bidding out current design, no significant design changes
- Include deductive bid alternates
- Site visit/pre-bid meeting early-August
- Sam's Branch WRF schedule:

Task	Duration (Weeks)	Start Date	End Date
Bid Phase			
- Advertise and Bid	5	7/29/2022	9/2/2022
- Evaluate Bids	1	9/2/2022	9/9/2022
- Award Contract	4	9/9/2022	10/7/2022
- Notice to Proceed	1	10/7/2022	10/14/2022
Construction Phase			
- Contractor mobilizes onsite	4	10/14/2022	11/11/2022
- Substantial completion	130	10/14/2022	4/11/2025
- Final completion	4	4/11/2025	5/9/2025



Questions?

Louis Duffie – Project Manager
919-695-1042
lduffie@townofclaytonnc.org



